

CLEANING TIPS

KITCHEN

Steel sink, taps

Use the detail nozzle with or without brush. Adjust to high steam and aim the jet directly at the area to be cleaned. In heavily soiled areas pre spray with the Superclens Multi Surface Degreaser. Vacuum or dry with an absorbent cloth.

Work surfaces

Use the squeegee. Adjust to medium steam. Move across the surface keeping the tool in contact with the surface. Use steam and vacuum.

APPLIANCES

Freezers, Fridges

Only use steam on appliances where the manufacturer allows.

Disconnect from the mains and empty. Steam the walls, vacuum and dry with an absorbent cloth.

Cookers

Only use on appliances where the manufacturer allows.

Use the detail nozzle with the detail brush for heavily soiled areas. Adjust to high steam and aim the jet directly at the area to be cleaned. Vacuum and if needed dry with an absorbent cloth. Superclens Multi Surface Degreaser should be used on all heavily soiled areas.

BATHROOM

Taps, Toilet, Bathroom Fittings and Accessories

Use as with kitchen sinks and taps.

Shower Cubicle

For corners and grooves use the detail nozzle with the detail brush if needed. Try to avoid silicone seals. Vacuum to dry.

Glass and Mirrors

DO NOT use steam on silk printed or painted glass.

To prevent breaking always preheat cold glass by steaming at a distance of 30-40cm. To clean, adjust the steam to medium and use with the squeegee. Use steam and vacuum, working down the surface quickly with the rubber pressed firmly to the glass.

Tiling

Use the brush with the wide vacuum nozzle. Adjust the steam to high pressure and run the brush over the surface without pressing against it. Use steam and vacuum together.

UPHOLSTERY AND FURNISHINGS

Furniture Cleaning

The appliance can be used on all plastic furniture. Be careful when using on polished or lacquered surfaces. Carry out a test on a hidden area. The detail nozzle can be used and use the squeegee on flat areas. Adjust the steam to medium and move the tools quickly across the surface.

Use steam and vacuum.

Furniture Dusting

Use the detail nozzle, adjust the steam to high and spray from a distance of 30-40cm. Dry immediately with a clean absorbent cloth.

Upholstered furniture

DO NOT use steam on leather, alcantara or delicate fabrics.

Use the Upholstery Steam/Vacuum brush and adjust the steam to high. Use steam and vacuum. Always use in the direction of the grain.

CARPETS.

Use the Vacuum/Steam brush with the carpet insert. Adjust the steam pressure to suit the carpet. Low on delicate medium on others. Use the vacuum to dry the carpet. Use the steam to sterilise carpets, neutralise bacteria, dust mites and allergens. Vacuum to dry. Always vacuum with the grain of the carpet.

PARQUET AND LAMINATE FLOORING

Before use test on a hidden spot to make sure no damage is done to the surface of the flooring. Use the Vacuum/Steam brush with the Hard Flooring insert fitted. Adjust the steam to low and move quickly across the floor. Use steam and vacuum together.

HARD FLOORING

Use the Vacuum/Steam brush with the hard flooring insert fitted. Adjust the steam to medium and move quickly across the surface. Use steam and vacuum.

CAR INTERIORS

Use as described in Upholstered Furniture cleaning.

WARNING! With valuable or delicate fabrics and carpets check with the supplier. If the steam is likely to damage the item. Check first on a hidden spot to make sure no loss of colour occurs.

SAFETY

IMPORTANT - Please read before use

The appliance delivers hot steam at pressure through the handle and the accessories. DO NOT allow steam to come into contact with bare skin. NEVER aim the steam directly at people or animals or electrical sockets.

Before use carry out a visual inspection of the appliance. Make sure the flex and plug are undamaged. Check the body of the appliance for damage. If there is any damage **DO NOT** use the appliance.

Familiarise yourself with the machines operation before use, and use the appropriate Personal Protection Equipment, if using in a confined space or working overhead.

Never aim the steam at electrical installations. Only clean electrical appliances where this is allowed by the manufacturer

When carrying out a function check direct the steam nozzle away from yourself. Check accessories before fitting.

The machine must only be used in the horizontal position, with all three wheels on a solid flat surface.

The machine is 220/240Volt, if using an extension lead make sure it is undamaged, earthed and fitted with a 13amp fuse. If in any doubt contact a qualified electrician/installer.

Do not allow the cable to come in contact with any surface or objects that could damage it.

The appliance has parts that heat up when in use, please be careful when using the appliance. Never allow children near the appliance when in use.

Never leave the appliance unattended when it is plugged in. When the appliance is not in use, unplug from the mains.

Turn off the steam by the button on the handle before fitting or changing accessories.

Keep the appliance above freezing temperature and do not use boiling water on the appliance. Never put the machine in water.

Leave to cool down before putting the machine away.

The machine must be repaired and serviced only by an Authorised Service Agent. Any unauthorised repairs to the equipment will invalidate the warranty. The manufacturer will not be held responsible for any damage or injury resulting from unauthorised repair or misuse.

In case of emergency turn off the machine by pressing the top part of the main switch then unplug from the mains socket.

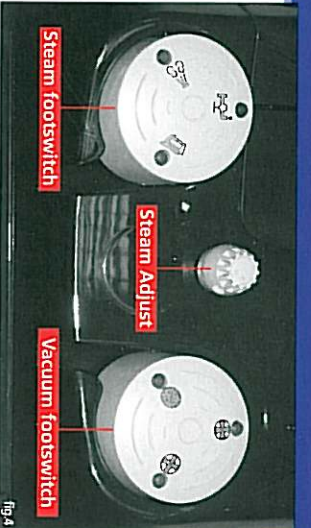
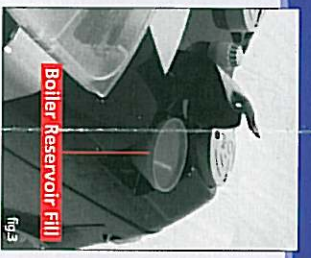
Be careful using the steam on wood or delicate surfaces.



Steam & Vacuum Machine



User Instructions



Set Up Instructions

Dry and wet vacuum

Unlock the grippers and lift the clear cover. Pour tap water into the dirty water container. The level of water must be between the Minimum and Maximum markings. The machine will not operate if the water is above or below this level. Replace the clear cover and close the grippers. (fig 1)

IMPORTANT

Always fill the dirty water container with the correct amount of water. This is a filter and prevents damage to the appliance.

Fitting the Hose

Lift the hose inlet cover at the front of the machine and push the hose until it locks in position. (fig 2)

Steam

Open the boiler reservoir cover. Fill the reservoir with tap water, about 1 litre, using the funnel. This reservoir will continuously fill the boiler. (fig 3)

IMPORTANT

Do not put any chemicals into the boiler, tap water only!

Switching on

Plug the machine into a suitable (220-240v) mains socket.

Superclens®

Turn on the machine by pressing the lower section of the main power switch, at the rear of the machine. The switch indicator will light up. Press the steam foot switch to start the boiler. The orange steam light will flash. When the light stays on, the steam is ready to use.

Steam pressure is adjusted by the steam adjust knob (fig 4)

When the red light flashes the boiler is running low on water. The tank filling operation can be carried out with the appliance working. Open the side cover and carefully fill the reservoir with tap water, using the funnel provided. (fig 3)

Operating Instructions

Steam and Vacuum

The steam and wet vacuum will be used together for most steam cleaning operations.

Always make sure the hose is fitted correctly.

Steam Cleaning

Set up the machine as instructed and fit the required accessory. The steam is activated by pressing the button on the handle until it lights up. Use the trigger underneath the handle to activate the steam.

Wet Vacuum

Set up the appliance as instructed. Fit the required accessory. (fig 5) Press the vacuum foot switch to turn on the motor. (fig 4) To adjust the vacuum power press the vacuum switch on the

handle for a few seconds. The lights on the switch will light up as follows:

- 2 lights for medium power.
- 3 lights for high power.
- 1 light for low power.
- When you have the required power release the handle switch.
- To turn off the motor press the vacuum foot switch briefly.

The vacuumed dirt and liquid is collected in the dirty water container. When the maximum level is reached the indicator light comes on and sensors stop the vacuum. To continue, empty the dirty water container and refill with clean tap water to the required level. (fig 6)

Operating Instructions

The steam vacuum cleaner uses a filter system based on nebulised water in conjunction with a HEPA filter and is very efficient at removing DUST, POLLEN, DUST MITES AND BACTERIA after steaming has neutralised them.

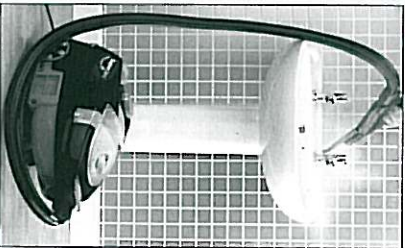
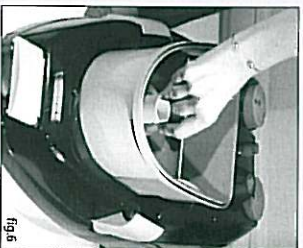
After vacuuming remove the dirty water container and empty. Wash and leave to dry.

Dry Vacuum

Fit the required accessory and proceed as in wet use. Do not activate the steam

Cleaning the appliance

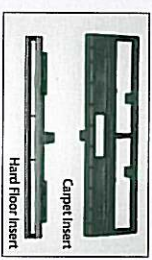
After using the steam vacuum cleaner, always clean the appliance by washing out the dirty water container and wiping the body of the machine with a soft damp cloth.



Accessories



Floor Vacuum Steam Brush
This attachment can be used to steam and vacuum, using the Carpet or hard flooring insert.



Upholstery Steam Vacuum Brush
This attachment can be used to steam and vacuum upholstery and soft furnishings.



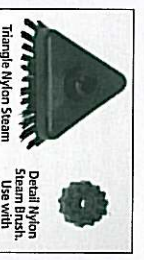
Squeegee
Use for steaming hard surfaces and windows.



Detail Nozzle
This can be used on its own or with either of the nylon brushes. Should be used with vacuum attachment.



Triangle Brush
Use on larger soiled areas, shape allows cleaning up to edges and into corners



Detail Brush
Use on small heavily soiled areas or stains, where brushing will achieve improved results.



Multi Surface Degreaser
Use before steaming on areas contaminated by grease. Formulated to make the steaming more effective by helping to dissolve fats and greases.

